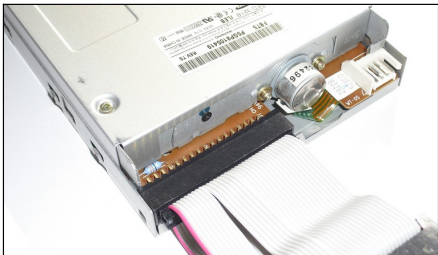
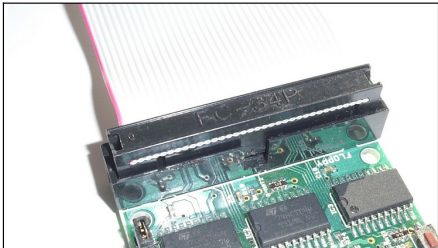
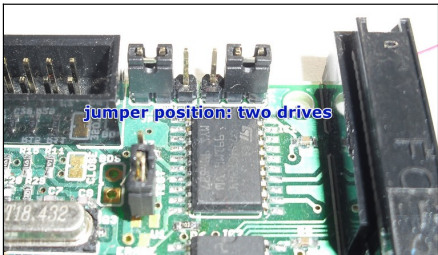
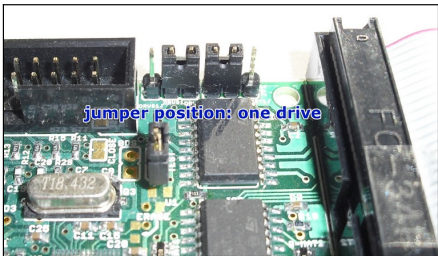


These instructions are meant to get you started quickly. We recommend you only attach one drive for the time being. Once it is working, you can connect a second drive. **Warning: Do not connect or disconnect anything on your own unless you have read the main product manual as well. A false connection can damage the device and will probably void your warranty!**

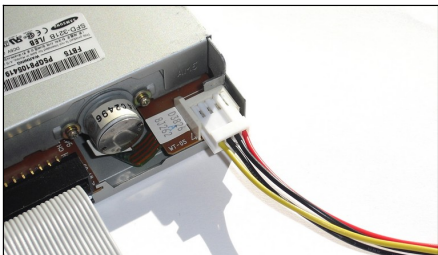
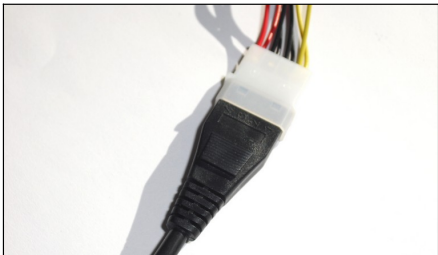
- Place the KryoFlux board and the disk drive on a flat, non-conductive surface. Make sure you will not short circuit the device by placing it on a metal table or similar. As a matter of fact, anti-static bags have a high resistance but are conductive!
- Connect KryoFlux and drive with floppy data cable. Check for correct orientation, the marked wire (usually red or white) signals data line 1.



- We only want to work with one drive now, so please set the drive select jumpers to the inner position. If you want to use two drives on the same bus later on, set them to the outer position after the first drive has been installed.



- Connect the power supply unit (PSU) to your drive. Make use of adapter cables as needed. Do not plug the PSU into the mains yet.



- Download the KryoFlux software package (includes drivers) from our Website <http://kryoflux.com/?page=download> and extract it.

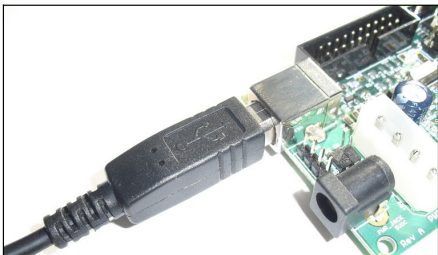
- Windows:** Copy the DiskTool Console (32 or 64bit *DTC.exe* and *capsimg.dll*, *firmware\_kf\_usb\_rosalie.bin*) to a location of your choice. Also take note of the location of the "driver" folder, as it will be needed to complete the following steps.

**macOS:** Just run the installer (*KryoFlux.pkg*). This will install DTC as well as libusb. The installer includes a text file that contains a list of files and folders installed should you want to remove them later. Please continue with step 7 and then directly proceed with step 11.

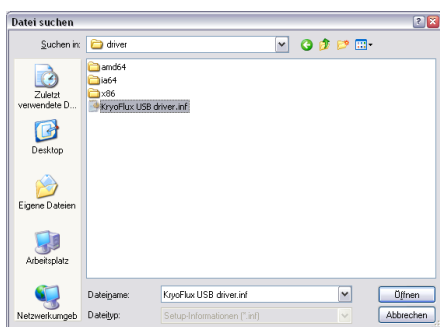
**Linux:** Copy the DiskTool Console (*DTC32* or *DTC64*, *firmware\_kf\_usb\_rosalie.bin*) to a location of your choice. Please install *libusb 1.0.9* (available separately, chances are it's already installed as this is a popular component). Please continue with step 7 and then directly proceed with step 11.

**Amiga OS 4:** Copy the DiskTool Console (DTC, *firmware.bin*) to a location of your choice. Copy *capsimage.device* to "DEVS:". Please continue with step 7 and then directly proceed with step 11.

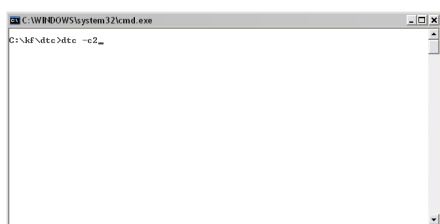
- Attach the USB cable to KryoFlux and then attach it to your computer. Do not use a USB hub!



- Open Device Manager and check under LPT & COM ports that a device called "Bossa" pops up. Older versions of Windows might just show an unknown device. Right click the "Bossa" (or unknown) device and chose to update driver. Then chose to pick the driver yourself from a list. Click to "Have disk", then navigate to the drivers folder in the KryoFlux folder and pick the KryoFlux driver. Make sure to instruct Windows that you will pick the proper driver; otherwise Windows might "insist" on the Bossa driver being the right choice.



- Open a command line (Start Menu, "Run") and change to the folder where DTC resides. Enter "DTC -c2".



- The device will re-enumerate, so Windows has to install another instance of the driver. Please follow the same procedure mentioned in **step 8**. DTC will report an error, which is expected due to the driver being installed.



- Plug the PSU into mains.
- Enter "DTC -c2" (again). DTC will now check for the maximum track your drive can access. Depending on the drive type this seeking might fail; this usually does not interfere with standard operation.



- KryoFlux is set up. Congratulations! **Versions of Windows 10 and 11 tend to automatically install the "Boss" device again.** In this case, right click and chose to replace driver manually. Go back to **step 8** and repeat.

#### Important general information:

- Place board and drive on insulating surface
- Always connect the drive to the board before making other connections.
- Never attach or detach the floppy data cable when drive or board are powered.
- Do not power the KryoFlux board via the PSU unless instructed to do so.
- Always plug in KryoFlux before the drive is powered.
- When using two drives on the bus, DTC requires to be told which one to use.
- Always unplug and disconnect from mains when unused. Do not leave unattended.*

#### To dump a standard 3.5" Amiga disk to a .ADF container type:

DTC -f<name.adf> -i5  
e.g. "DTC -fdiskname.adf -i5"

These images can be used with e.g. WinUAE to play games or access your data.

#### To dump a 3.5" high density PC disk to a .IMG container type:

DTC -f<name.img> -i4  
e.g. "DTC -fdiskname.img -i4"

These images can be used with e.g. the plugin for TotalCommander or in DOSBox.

#### To dump a standard 5.25" C64 disk to a .D64 container type:

DTC -f<name.adf> -i6  
e.g. "DTC -fdiskname.d64 -i6"

Please note that there are additional hardware requirements ("fake index", refer to the main manual for this) to dump the flipside of a C64 disk. These images can be used with e.g. VICE to play games or access your data.

#### To dump a standard 3.5" Amiga disk to a .ADF container and at the same time create STREAM files for preservation type:

DTC -f<name> -i0 -f<name.adf> -i5  
e.g. "DTC -fdiskname -i0 -fdiskname.adf -i5"

The STREAM files (one file per cylinder/side) can be sent to the Software Preservation Society for further processing. They can as well be used to write the contents back to disk.

#### Legal notice:

KryoFlux® is a registered trademark of KryoFlux GmbH. Used with permission. All other product names, logos, and brands are property of their respective owners. All company, product and service names used in this document are for identification purposes only. Use of these names, logos, and brands does not imply endorsement.

To get the most out of your KryoFlux device, visit the KryoFlux Support Forums.  
It is free and anonymous!

